

# Melody Outline

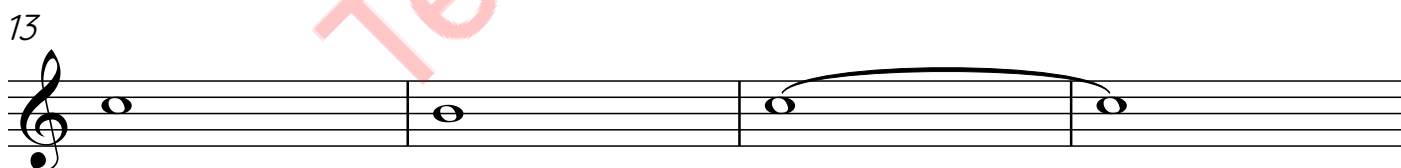
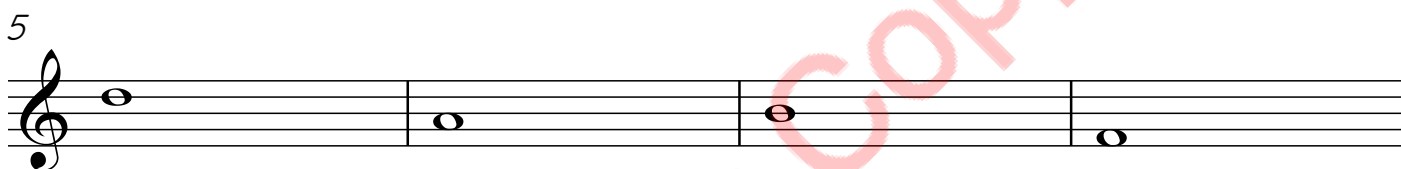
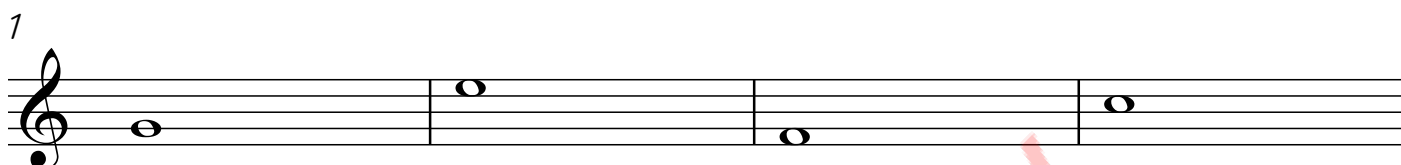
Grade Seven  
Keyboard

Song Title.....

Intro



Part One



**Refer to the syllabi for general criteria.**

\* The four bar introduction must include chords and a melody line.

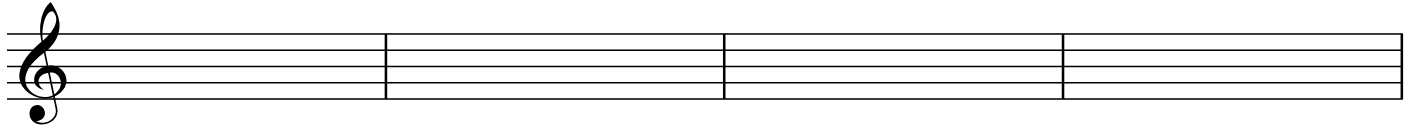
**Part One Bars 1 to 16:**

- \* The melody must include passing notes and auxiliary notes.
- \* One chord per bar must be added.
- \* The bass progression of **IIm V7 I** must be included at least once.

## Part Two

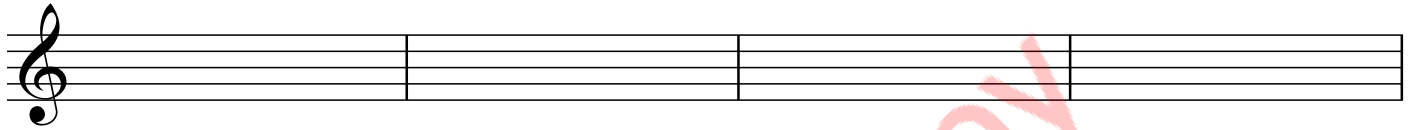
Grade Seven  
Keyboard

17 F F C C




A musical staff in treble clef with four measures. Above the staff, the chords F, F, C, and C are written above the first, second, third, and fourth measures respectively. The staff is empty of notes.

21 Dm Dm G<sup>7</sup> G<sup>7</sup>



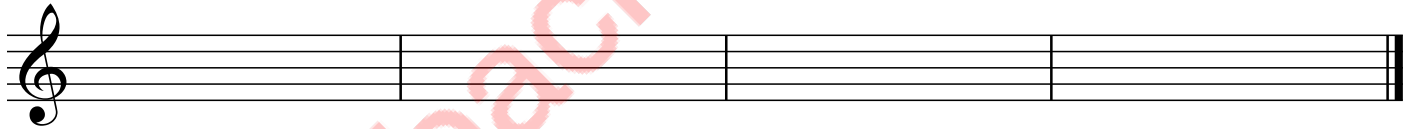
A musical staff in treble clef with four measures. Above the staff, the chords Dm, Dm, G<sup>7</sup>, and G<sup>7</sup> are written above the first, second, third, and fourth measures respectively. The staff is empty of notes.

25 C C Dm Dm



A musical staff in treble clef with four measures. Above the staff, the chords C, C, Dm, and Dm are written above the first, second, third, and fourth measures respectively. The staff is empty of notes.

29 F G<sup>7</sup> C C



A musical staff in treble clef with four measures. Above the staff, the chords F, G<sup>7</sup>, C, and C are written above the first, second, third, and fourth measures respectively. The staff is empty of notes. A double bar line is at the end of the fourth measure.

**Part Two Bars 17 to 32:**

- \* A more comprehensive melody must be added.
- \* The time signature may be changed.
- \* Some chord substitutions and/or chord alterations must be included.